

Board to Board Fine Pitch 0.35mm

Overview

The next level of refinement in design comes in the form of fine-pitch alternatives. ACES Board-to-Board Fine Pitch Series features a smaller, thinner design to meet the miniaturization trend in the market. With the smaller, narrower design and mating height, our Fine Pitch Series can be used in various applications, such as consumer wearable devices: smart watches, VR headsets, smart glasses, e-wallets, and medical devices: hearing aids, wireless EEG headsets, and remote patient monitoring devices.



P/N	Description	Mating Height (mm)	Pin Count
51083 Series	0.35mm pitch BTB conn. SMT Plug Type	0.6	16
51084 Series	0.35mm pitch BTB conn. SMT Receptacle Type		

Specification

- Voltage: 30 Volts AC
- Current: Power 5A / Signal 0.3A
- Operating Temperature: -40°C to +85°C
- Contact Resistance: Signal contact: 100mΩ MAX.
Power contact: 30mΩ MAX.
- Insulation Resistance: 100mΩ MIN.

High Speed Support

- Supports USB4 Gen3
- Supports PCIe Gen4

Applications



AIO



Mobile phone



Wearable device



Tablet PC



Hearing aids

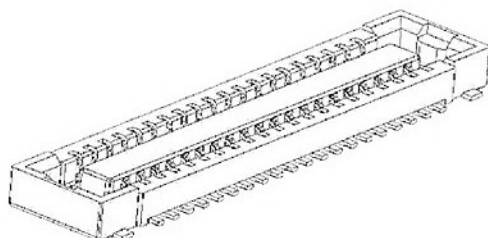
Features & Benefits

Rated current 5A

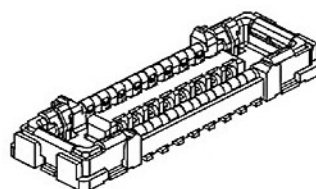
- 2 Power contacts up to 5A, 0.3A MAX. for signal.
- Power + signal hybrid connector.

Space saving

The power lines are concentrated into 2 power contacts instead of conventional multiple signal contacts.



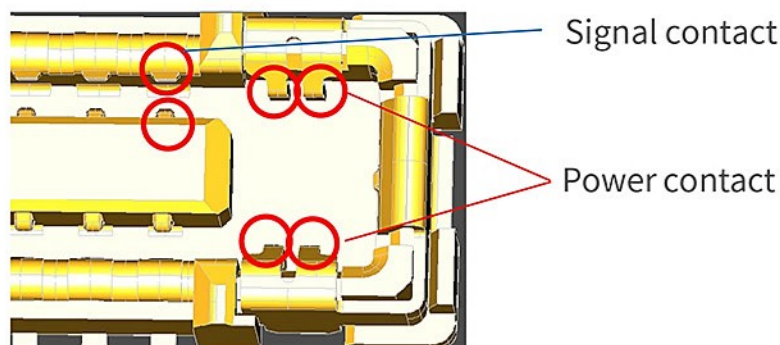
Conventional Design: 40 pins



Current Design:
2 Power + 16 signal pins only

Highly reliable contact design

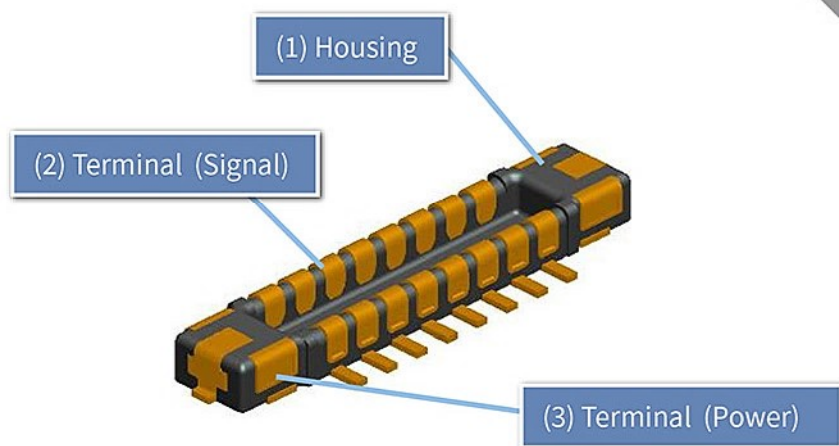
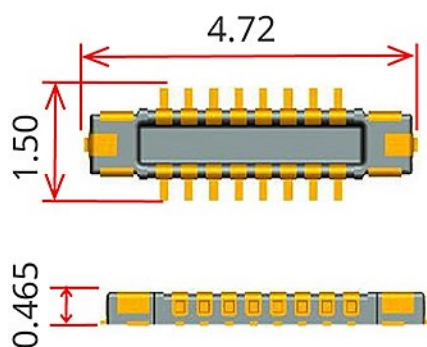
Multi-point contact design for both power & signal ensures a highly reliable contact.



Supports USB4 Gen3 & PCIe Gen4 transmission

The signal connector supports USB4 Gen3 and PCIe Gen4 transmission signals.

51083 Plug Type



51084 Receptacle Type

